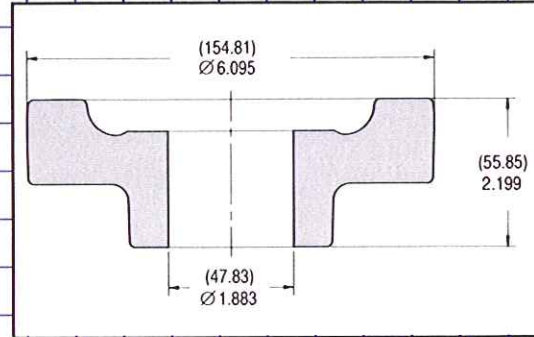
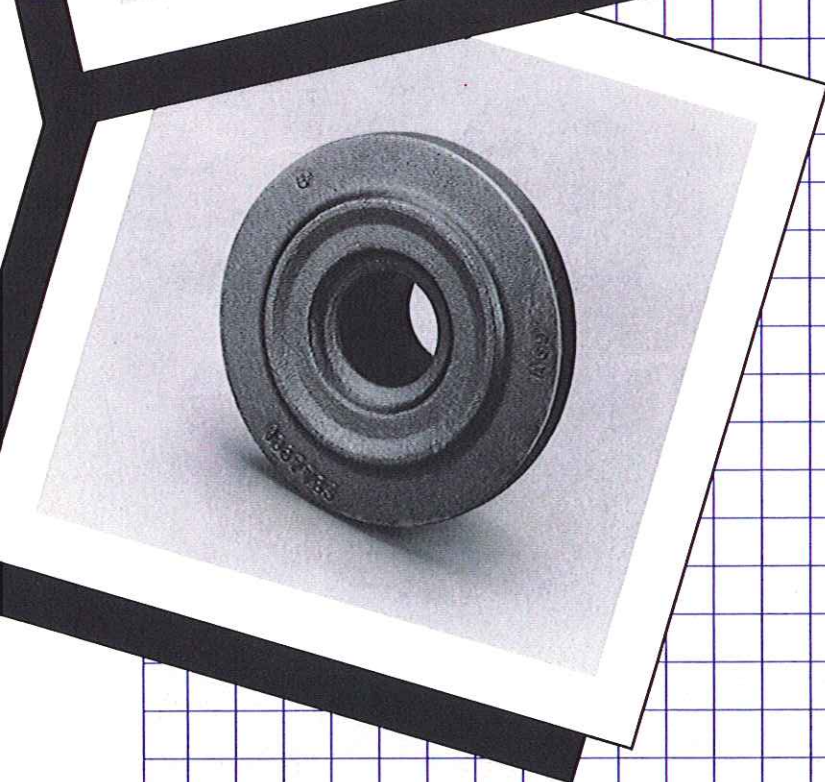
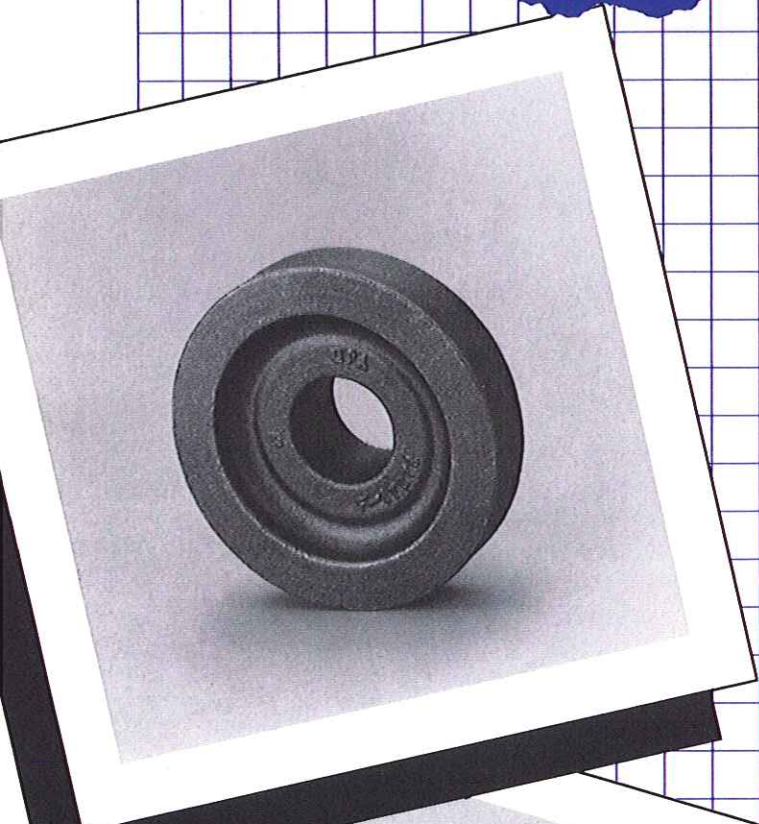
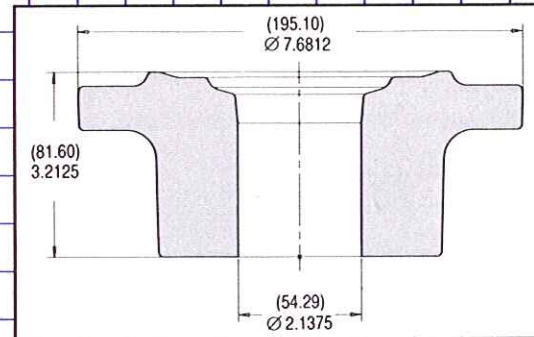


# Presrite Near Net Technical Report



Data	
Finish Machine Allowance per side at mean.	1.42 mm/.056 in.
Concentricity T.I.R.	1.14 mm/.045 in.
Tolerance	±.76 mm/±.030 in.
Net Weight	4.08 Kg/9.0 lbs.



Data	
Finish Machine Allowance per side at mean.	1.90 mm/.075 in.
Concentricity T.I.R.	1.52 mm/.060 in.
Tolerance	±.76 mm/±.030 in.
Net Weight	9.25 Kg/20.4 lbs.



**Presrite Corporation**

Cleveland: 3665 East 78th Street, Cleveland, Ohio 44105, (216) 441-5990, Fax: (216) 441-2644

Cleveland: 7105 Bessemer Avenue, Cleveland, Ohio 44127

Jefferson: 322 South Cucumber Street, Jefferson, Ohio 44047

Website: [www.presrite.com](http://www.presrite.com)